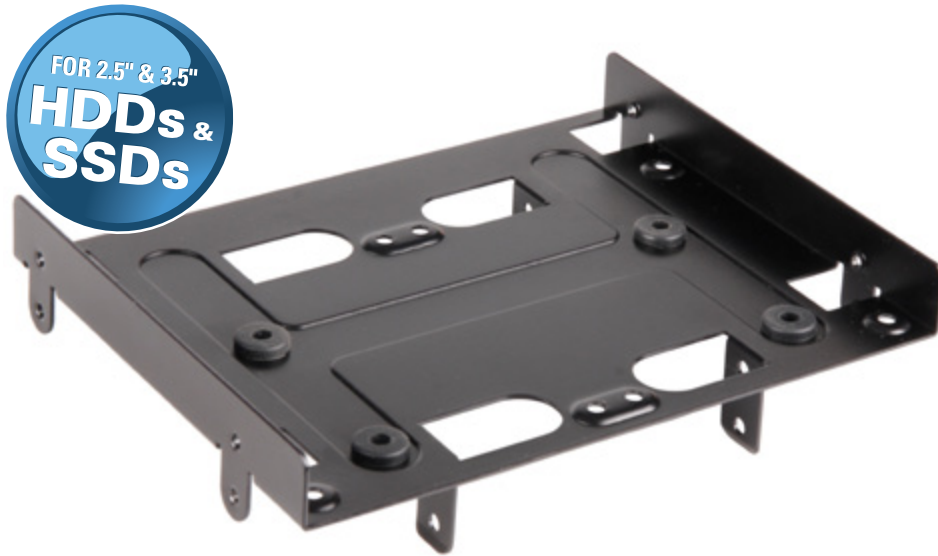


5.25" BAYEXTENSION

Mounting frame for HDDs and SSDs



Features:

- Suitable for either up to 4x 2.5", or 1x 3.5" and 2x 2.5" HDDs and SSDs
- Fits into standard 5.25" mounting bays
- Decoupled mounting for 3.5" HDD
- Dimensions: 116 x 146 x 37 mm (L x W x H)
- Weight: ~150 g
- Colors: black, green, blue and red

Package contents:

- 5.25" BayExtension mounting frame
- 4x decouplers
- 4x mounting screws for 3.5" HDDs (coarse thread)
- 16x mounting screws for 2.5" HDDs/SSDs (fine thread)
- 4x mounting screws for the mounting frame (fine thread)
- Instruction Manual

Retail package:



Dimensions: 185x120x42 mm
Weight: ~220 g

PU: 30
Dimensions: 760x355x190 mm
Weight: ~8.5 kg
Customs tariff no.: 84733080
Country of origin: China



black



red



green



blue